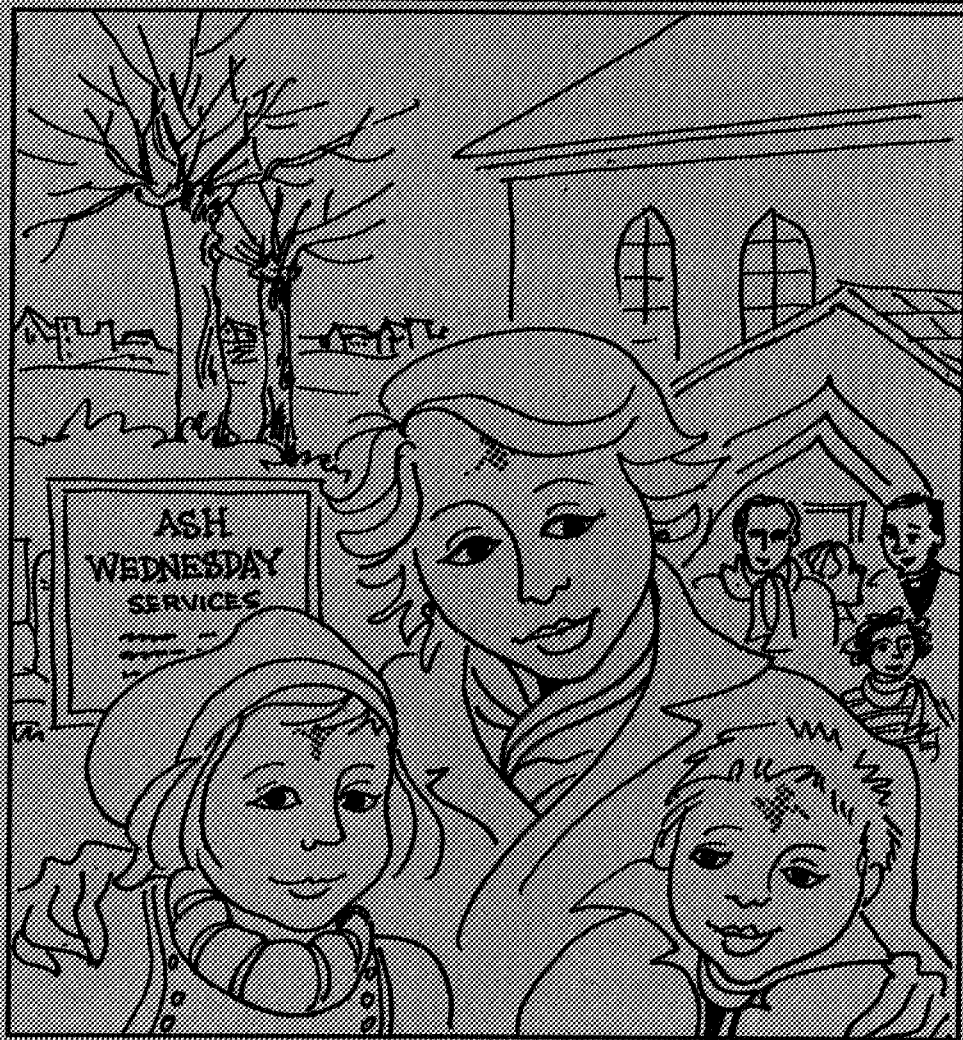


Deane Parish Magazine

February



2007



Parish Diary: February

	9:00 a.m.	10:30 a.m.	6:00 p.m.
Sunday 4th	Holy Communion (CW) Luke 11: 1-13 Phil 4: 4-7	Family Parade Luke 11: 1-13	Holy Communion (BCP) Luke 11: 1-13 Phil 4: 4-7
Sunday 11th	Holy Communion (BCP) John 15: 1-8 James 1: 1-8	Holy Communion Sunday School John 15: 1-8	Service of the Word John 15: 1-8 James 1: 1-8
Sunday 18th	Holy Communion (BCP) Matthew 14: 22-33 Romans 10: 14-17	Family Worship Romans 10: 14-17	Holy Communion Matthew 14: 22-33 Romans 10: 14-17
Sunday 25th	Holy Communion (BCP) Luke 1: 5-23 Romans 15: 14-24	Service of the Word Sunday School Luke 1: 5-23	Evening Prayer (BCP) Luke 1: 5-23 Romans 15: 14-24

ASH WEDNESDAY SERVICE

21 February 2007

Service of Holy Communion

7.30 p.m.

St Andrew's, Over Hulton

St Mary the Virgin

Junction Road
Deane, Bolton
BL3 4LT

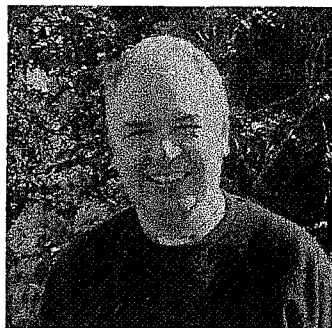
www.deaneparish.info

Rector: Ian Mainey
(01204) 61819

Curate: Dan Howard
(01204) 855112

Magazine: Angela Howard
(01204) 855112

The Rector Writes Big Brother and Looking in the Mirror



If you have ever wondered how far God would go to show his love then look in the mirror and wonder no more. We need not look any further than ourselves to find the most shocking and amazing displays of God's grace. And if we happen to think otherwise it is only because we have not seen ourselves as we truly are.

It's been said and sung many times, "There but for the grace of God go I". At first that sounds very good, very noble, but such sentiment can mask a dangerous pride. Its not really all that much different from the religious leader in Jesus' day who, upon looking at a sinner on his knees crying out to God for mercy, said "I thank you God that I am not a sinner like everyone else, especially like that tax collector over there" (Luke 18:11). It's a view that focuses on someone else's misfortune, someone else's character flaw. It's the view that sees someone else as worse than ourselves.

How much better it would be if we got to thinking, and indeed praying,, "Here, because of the grace of God, and for no other reason, am I". Why? Because I am the only person I truly know about when it comes to sin – because I am an authority on the subject, and so are you.

I thought about this when I was reading in the newspaper, and watching on the TV, the huge rumpus over Big Brother and the charge of racism levelled at one of the contestants. I have to say right from the start that there appears to be a legitimate argument as to whether what was said was actually racism. I'm not sure one way or the other. All I know is that those who made the unsavoury remarks about one of the contestants, who happened to be Indian, should be thoroughly ashamed of themselves, and I suspect that afterwards they will be. But

at the same time I have to ask myself have I never thought things about others over which I should be ashamed? And what about you?

The problem with the Pharisee in Luke 18 was that he hadn't a clue about the sinner – who he was or what he had done. He had no point of reference to judge the man's life, apart from his own inflated view of himself. If he had even the slightest clue about his own sin he would have realized that he doesn't have any business making the assumption that this sinner was any worse than he was.

I guess that the only prayer any of us can really pray on the subject of sin is, "Lord, have mercy on me, a sinner." This is the one prayer that we can all offer up wholeheartedly to our loving heavenly Father and know that it will be accepted.

I guess, in the light of what I have said, that it's best to steer completely clear of the comparison game, although that is easier said than done. Any attempt to better ourselves at the mercy of someone else's failure will always bring a twisted view of both ourselves and others.

We need to see that the immensity of God's mercy is not displayed in what he did for the world, or for someone else. It is not displayed in someone else's story about how far they had sunk before Christ picked them up (which of course is never as low as we have ever sunk!). Nor is it discovered through some theological understanding or study on the subject of grace (although if you want to read such a study try Philip Yancey's book "What's so amazing about grace?"). No the immensity of God's grace is revealed finally, and only, in the incredible realization that, God's mercy looked down from heaven and found out me! †

The young curate was looking after his baby daughter while his wife went shopping. He decided to go fishing and take the toddler along with him. When he returned home he told his wife: "I'll never take her with me again. I didn't catch a thing." His wife said: "Oh next time I'm sure she'll be quiet and not scare the fish away." "It wasn't that," the father replied. "She ate all the bait."



Deane Parish Weekend Away

a mixture of worship, teaching and sharing God's word, fellowship, relaxation and generally getting to know one another.

- When?** from Friday evening 11th May to Sunday lunch (inclusive) 13th May, 2007
- Where?** Beechwood Court, Conwy, North Wales.
- Who?** Anyone of the church family
- How Much?** £81.50 per adult; 12 -17 year olds £64.80; 6-11yrs old £45.00; children under 6 -free.

The **theme** of the weekend is about church growth and the guest speaker is Rev Robin Gamble, an excellent speaker with a very down to earth approach and plenty of humour thrown in.

There will be an opportunity to **explore** the area on the Saturday afternoon and there are plenty of places to visit within a short radius of the centre.

The **cost** includes all meals (which we have been told on good authority are excellent). We are also intending to hire a mini bus to help with transport if the need arises - so please let us know if you would need such help.

Please think about coming on the weekend, and being a part of learning how we can grow as a church and as an individual in God's kingdom. If you would like to come there is a list on one of the tables at the back on church (if you had previously sign up on a list please do so again as the original list has got misplaced in a tidying up session!). For more information please speak to Nola Kilsby (01204 492351).

Plans to re-order the interior of the church building and to replace the Memorial Hall

Many church members attended a meeting held in October last year, at which members of the Church and Hall Development Committee presented plans for changes to the interior of the church. Following this meeting (at which the plans were generally approved), a display of the proposed developments was mounted in the Hulton Chapel area, so that we could all study and discuss the proposals and ask questions about them. People were invited to complete a questionnaire so that the PCC would have some indication of what percentage of the congregation approved of the plans, how many objected, and if so what were the major objections.

This presentation and discussion was the culmination of many years of deliberation in the PCC. In 1999, it was agreed that the poor state of the Memorial Hall meant that it was uneconomic to repair it, and work therefore began on planning for a new building to replace the hall. Little progress was made, however, mainly because the church had no clear vision for the purpose of the new building, but also because of funding issues, the retirement of the then Rector and the subsequent interregnum.

Despite the apparent lack of progress, people continued to pray that the Lord would guide us, and the project took on a new impetus in 2004. In November of that year the PCC appointed an architect to work with the Church and Hall Development Committee to agree a brief and draw up plans. There was a realisation that we could not plan the new hall before we had agreed what new facilities could be provided in the church. The instructions to the architect were to proceed according to the following schedule:

Phase 1

Re-ordering Front of Church and Chancel, including redecoration and new lighting to the whole Church.

Phase 2

Re-ordering rear of Church, including alteration and making good areas affected in the main body of the Church.

Phase 3

New Memorial Hall, including external works and link to church area if feasible.

Each of the above Phases would comprise of three stages

Stage 1 Outline, detail and final proposals.

Stage 2 Tender drawings and Tenders

Stage 3 Mobilisation, on site build, completion,

The PCC agreed that the project should proceed to Phases 1 and 2, Stage 1.

This is where we are now - the Church and Hall Redevelopment Committee has presented outline and detailed proposals for Phases 1 and 2 to the PCC and to all church members. All church members have been given the opportunity to complete a questionnaire to make their views known and an analysis of the responses was submitted to the PCC on 13 December 2006. The way ahead will be the main agenda item at the next PCC meeting on 5th February 2007.

The PCC will discuss:

- Should any changes to the current plans for the Church be considered?
- Should we start to consult with the relevant approval bodies?
- How should we seek funding for the project?
- Should we now consider plans for the new Hall?.
- Which development should come first - Church redevelopment, or the new Hall?

In conclusion, let us remind ourselves of the vision which has inspired those who have been working on this project. During its long history of almost 500 years the present building has undergone many changes, as successive generations of God's family at Deane sought to adapt it to fulfil different requirements for worship and service to the community. The present plans are based firmly on a vision for the future of our church, and this vision can be summed up as follows - *a church at the heart of the community, a church with a heart for the community*. As part of this vision we plan to make the building accessible to the community, open for part of *every* day, to make it a place of welcome and service to the community, and most important, a place where people can find God, both in us, and in this building.

Overleaf is a summary of points raised through the congregational survey.

(cont'd from previous page)

Analysis of the congregational survey

- 57 questionnaires were completed.
- 41 Generally in favour
- 16 Generally against

Both those in favour and against would like to see some changes.

- 36 Removal of all or some of the pews and replace with chairs.
- 35 New toilets
- 33 Alterations to improve the heating
- 30 New kitchen facilities,
- 26 The flexibility that can be achieved
- 26 Re-positioning the organ to its original location
- 26 The formation of the heritage centre
- 26 Re-decoration of the Church
- 25 New improved lighting throughout
- 22 New glazed screen across rear
- 21 Formation of separate crèche area
- 21 Formation of more space at the rear for refreshments
- 21 Formation of meeting rooms
- 21 New glazed entrance doors into Church
- 21 Removal of the choir stalls to create more room in the Chancel
- 21 Formation of the mezzanine area
- 19 Improved access to the ringing chamber
- 19 Re-finishing and re-alignment of the pulpit

The following are specifically noted as reservations concerning the proposals.

- 15 Would like to see the Memorial Hall re-built first
- 9 Mezzanine
- 8 Removal of any of the pews, with a further 2 suggesting removal of some of the pews
- 6 The square shape of the balcony viewed towards the rear of Church
- 3 Glass screen
- 3 Removal of the stone flags from the floor
- 3 Requirements for more storage facilities
- 3 Use of a professional fundraiser

- 3 Access from the road and lighting the entrance footpath
- 2 Open the Church now, don't wait until the work is done
- 2 Include a path connecting the Church to the Memorial Hall
- 2 Solid balcony and staircase detail
- 1 Location of the toilets and kitchen
- 1 The Church may not feel historical after the re-ordering
- 1 Concern regarding the staffing of the opened building
- 1 Re-introduce the existing font to the rear
- 1 Suggestion to remove the Hulton Chapel completely

For more information about the proposals and analysis of the congregational survey, please speak to Nola Kilsby or another member of the committee (Ian Mainey, Craig Mochrie, Julie Cooper, Terry Oakes and Mike Kirkby). †

News from Blackrod

Elizabeth Plant, who is on a four month placement at St Katharine's, Blackrod, as part her OLM training, has sent us news of how she has enjoyed the first few weeks of her placement. She reports that everyone has been very welcoming and friendly. Blackrod is what we would call a much 'higher' church than Deane. All their services are Eucharists. They have Sunday services at 8am and 10am, but none on a Sunday evening. Instead they have services on Tuesday mornings and Wednesday evenings.

Blackrod is itself an interesting place, still being very much a separate village as Drane once must have been. It is in fact the most north westerly parish in the Manchester diocese. A mile north of the church one is in the Blackburn diocese and the Liverpool diocese is a similar distance to the west.

We look forward to seeing Elizabeth back with us in Deane at the beginning of May. †

Fairtrade Fortnight

26th February – 11th March 2007

The theme of this year's fortnight is 'Change Today, Choose Fairtrade.'

Fairtrade makes a massive difference to farmers and workers throughout the developing world and by buying Fairtrade products in the supermarkets or at the stall in church on the first Sunday each month, we are helping to make a difference. When buying these products we can know that the farmers who have grown the crops have received a fair price for their crops, rather than the profit being made by those in the trade chain. We can also know that the workers have fair and safe working conditions – a privilege few in the developing world know.

With over 2000 Fairtrade certified products now available, it's easier than ever to change what you eat, drink and wear to Fairtrade, and make a positive change today for the lives of millions and farmers in developing countries. Yes Fairtrade products do cost more – but that extra money is ensuring a living wage for those who produce the crops for us. We do not tolerate the exploitation of workers in our country and neither should we tolerate it elsewhere.

Why not take part in this Fairtrade Fortnight by using the stall of fairtrade products that will be at the back of church on Sunday March 4th? It stocks a wide range of products from everyday produce such as pasta and rice to treats such as mini chocolate eggs. If you have never visited the stall why not come and see what is available? If you already use it regularly why not try a new product?✚

Start!

**Discovering Christianity
In 6 small group sessions**

*Please contact Ian or Dan for details.
This is ideal for friends/colleagues with
little church background.*



A Celebration of Christmas

By Becky Rutter

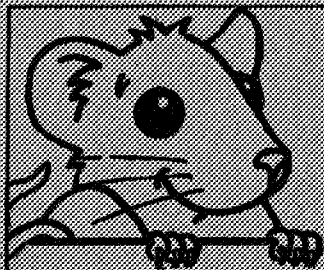
Christmas seems a long time ago, but the weekend before Christmas was a great weekend of celebration at Deane.

First up, Friday evening saw an amazing YZ-up café Christmas party, with loads of fun, games, great music and food. About 30 young people came along and were challenged to think about what they really wanted to ask for for Christmas. Thanks to Karen, Elizabeth, Sue, Sean, Simon, Malcolm, Dan and 'Rise' for a great evening!

Saturday night brought together more than 50 singers for a 'Sing for Pleasure' Christmas concert. After 5 rehearsals, lots of hard work (and fun!) a fantastic group of people, some who had never sung before, came together to perform a variety of pieces. We were privileged to be able to sing with BMS Singers, and a huge thank you to Jane for directing another successful evening, and to our very talented soloists, Rachel Catterall, Andrew Simms and Lisa Atherton. Thanks to all those who came along to help out with refreshments, tickets and welcoming our many visitors, and to those who came along to watch. Your support was very much appreciated.

Our Family Nativity service followed at 10:30 on Sunday morning, with Climbers and Explorers bringing us the familiar Christmas story with songs to well known nursery rhymes. We also had a very special visitor - Enoch the donkey, who brought us an eyewitness account of those special events over 2000 years ago! Enoch made lots of friends and I hope we'll see him back soon.

Finally Sunday evening was our traditional Carols by Candlelight service. The Church looked amazing and thank you to all those who helped with the decoration. It was great to see lots of unfamiliar faces (as well as lots of familiar ones) at what was a great end to a very enjoyable weekend and one which hopefully gave us all an opportunity to reflect and celebrate, in different ways, the message of Christmas.



MOUSE HOLE



FIND THE MISSING HUSBANDS

MARY BOAZ
SARAH JACOB
RUTH ZECHARIAH
REBEKAH JOSEPH
RACHEL ABRAHAM
ELIZABETH ISAAC



Use the clues to find the names.
The last letter of one name is the first of the next name.

P **L**
• Wrote 13 New Testament letters
• He wrote the third Gospel

I **R**
• Mother of John Luke 1: 13
• Sarai's servant Genesis 16:1

J
• Joseph's mother Genesis 30:24
• Wife turned to salt Genesis 19:26

U **N**
• Paul's friend 2 Corinthians 8: 27
• A brother of Jesus Matthew 13: 55

• Ruth's mother-in-law Ruth 3: 1

IT'S A PUZZLE!

God sent 9 plagues on Egypt.
What were they?
Change each letter to the one after it in the alphabet to find out.

AKNNC

EQNFR

FMZSR

EKHDR

CHRDZRD

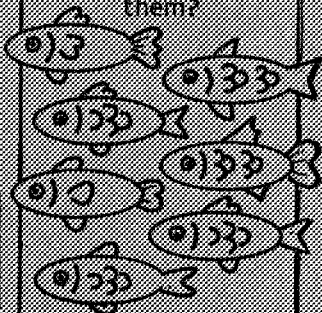
OKZFTD

GZHK

KNBTRSR

CZQJMDRR

The Disciples have been fishing and caught 2 fish the same, can you find them?



WHAT'S IN THE PICTURE?

Colour in all the shapes with a dot in to find out what Jesus wants us to do to each other.

